

E-Resilience Monitoring Dashboard

User Guide

19 August 2021. Contact: ESCAP-IDS <escap-ids@un.org>



ENEA: East and North-East Asia

China D.P.R. Korea Hong Kong Japan Korea (Rep)
Macao Mongolia Russian Federation

RECI: Regional Economic Cooperation and Integration - Pilot Countries

Kazakhstan Kyrgyzstan Mongolia

LDC: Least Developed Countries

Afghanistan Bangladesh Bhutan
Cambodia Kiribati Lao P.D.R. Myanmar, Nepal
Solomon Islands Timor-Leste Tuvalu Vanuatu

LLDC: Land-locked Developing Countries

Afghanistan Armenia Azerbaijan Bhutan Kazakhstan
Kyrgyzstan Lao P.D.R. Mongolia Nepal Tajikistan
Turkmenistan Uzbekistan

NCA: North and Central Asia

Armenia Azerbaijan Georgia Kazakhstan Kyrgyzstan
Russian Federation Tajikistan Turkmenistan Uzbekistan

PACIFIC: Pacific

American Samoa Australia Cook Islands Fiji
French Polynesia Guam Kiribati Marshall Islands
Micronesia, Nauru New Caledonia, New Zealand Niue
Northern Marianas Palau Papua New Guinea Samoa
Solomon Islands Tonga Tuvalu Vanuatu

Economic Groups



PACIFIC DEVELOPING: Pacific Developing

American Samoa Cook Islands Fiji French Polynesia Guam
Kiribati Marshall Islands Micronesia Nauru New Caledonia
Niue Northern Marianas Palau Papua New Guinea Samoa
Solomon Islands Tonga Tuvalu Vanuatu

PICS: Pacific Island Countries

Fiji Kiribati Marshall Islands Micronesia (Federated States of)
Nauru Palau Papua New Guinea Samoa Solomon Islands
Tonga Tuvalu Vanuatu American Samoa Cook Islands
French Polynesia Guam New Caledonia Niue
Northern Mariana Islands

SA: South Asia

Afghanistan Bangladesh Bhutan India
Maldives Nepal Pakistan Sri Lanka

SEA: South-East Asia

Brunei Darussalam Cambodia Indonesia
Lao P.D.R. Malaysia Myanmar Philippines
Singapore Thailand Timor-Leste Viet Nam

SSWA: South and South-West Asia

Afghanistan Bangladesh Bhutan India Iran (I.R.)
Maldives Nepal Pakistan Sri Lanka Turkey

SPECA: Special Program for the Economies of Central Asia

Afghanistan Azerbaijan Kazakhstan Kyrgyzstan Tajikistan Turkmenistan Uzbekistan

Function Icon



Focus Mode

Enlarges any data set or interactive maps to full screen



Drill Up

Folds all the detailed indicators



Drill Down

Unfold specific indicators that users select



Next Level in the Hierarchy

Opens all the indicators



Expand All

Opens all pillars and the indicators

Table of Content

Economic Group	3
Function	4
Filter (Slicer)	5
Front Page – Interactive Map	6-7
Front Page – Data Table	8-9
Bullet Chart	10-11
Internet Speed Map	12
Hazard Map	13
Indicators in Pillars	14-17
Acknowledgement	18
Glossary of terms, Abbreviations and Acronyms	19

Filter (Slicer)

5 different filters exist in hierarchical order

Geographical & Economic level Group filter must be selected initially to use the country filter

Pillar filter displays all the indicators in the selected pillar

Indicator filter shows one selected indicator

Country Group	Country	Pillar	Indicator	Year
Kazakhstan Kyrgyzstan Mongo...	All	All	All	2020
<input type="radio"/> ENEA	<input type="checkbox"/> Afghanistan	<input type="checkbox"/> DRR background	<input type="checkbox"/> 4G mobile network coverage (...)	<input checked="" type="radio"/> 2020
<input checked="" type="radio"/> Kazakhstan Kyrgyzstan Mong	<input type="checkbox"/> Armenia	<input type="checkbox"/> ICT infrastructure as a physical...	<input type="checkbox"/> Active mobile-broadband sub...	<input type="radio"/> 2022
<input type="radio"/> LDC	<input type="checkbox"/> Azerbaijan	<input type="checkbox"/> ICT policy in different sectors	<input type="checkbox"/> Adoption of emerging technol...	<input type="radio"/> 2024
<input type="radio"/> LLDC	<input type="checkbox"/> Bhutan	<input type="checkbox"/> ICT's role in setting up new sy...	<input type="checkbox"/> Adult Literacy (0-100% max)	<input type="radio"/> 2026
<input type="radio"/> NCA	<input type="checkbox"/> Kazakhstan	<input type="checkbox"/> ICT's role in setting up new sy...	<input type="checkbox"/> Availability of local online cont...	
<input type="radio"/> Pacific	<input type="checkbox"/> Kyrgyzstan		<input type="checkbox"/> Computer software spending (...)	
<input type="radio"/> Pacific Developing	<input type="checkbox"/> Mongolia		<input type="checkbox"/> Cybersecurity (0-1max)	
<input type="radio"/> PICS	<input type="checkbox"/> Nepal		<input type="checkbox"/> DRR Implementation 0 - 10 (...)	
<input type="radio"/> SA	<input type="checkbox"/> Tajikistan		<input type="checkbox"/> Ease of doing business (0-100 ...)	
<input type="radio"/> SSA	<input type="checkbox"/> Turkmenistan		<input type="checkbox"/> E-commerce legislation (0 -4 ...)	

Data Table (Front Page)

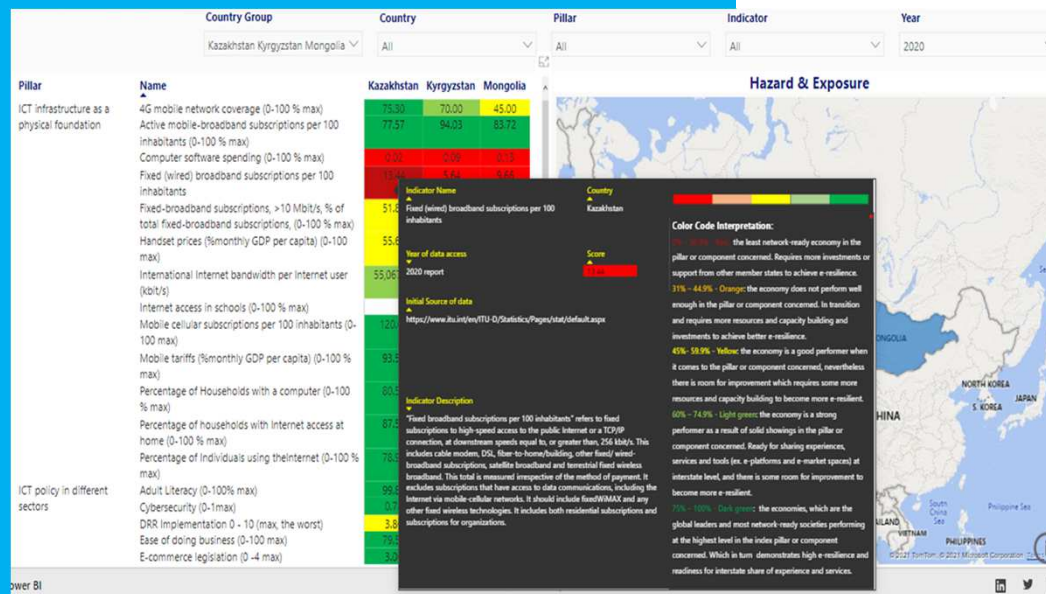
Pillar	Name	China	Dem.Korea	Hong Kong(China)	Japan	Macao(China)	Mongolia	Rep. Korea	Russian Federation
ICT infrastructure as a physical foundation	4G mobile network coverage (0-100 % max)	99.40		99.99	99.00		45.00	99.90	70.00
	Active mobile-broadband subscriptions per 100 inhabitants (0-100 % max)	93.46	8.83		120.00		83.72	113.62	87.88
	Computer software spending (0-100 % max)	33.77		31.90	24.50		11.06	20.70	19.91
	Fixed (wired) broadband subscriptions per 100 inhabitants	18.54			32.62		9.64	41.60	20.80
	Fixed-broadband subscriptions, > 10 Mbit/s, % of total fixed-broadband subscriptions (0-100 % max)	98.47		85.86	91.15		100.00		76.74
	Handset prices (%monthly GDP per capita) (0-100 max)	46.73		66.04	71.50		30.61	63.16	58.97
	International internet bandwidth per internet user (kbit/s)	27,722.32		9,225,821.38	26,888.68		22,399.44	53,107.47	68,025.95
	Internet access in schools (0-100 % max)	98.23		99.22			70.66	100.00	
	Mobile cellular subscriptions per 100 inhabitants (0-100 max)	115.53	88.46		120.00		120.00	120.00	120.00
	Mobile tariffs (%monthly GDP per capita) (0-100 % max)	79.82		81.88	53.59		50.51	60.65	66.09
	Percentage of households with a computer (0-100 % max)	55.00		77.60	76.38	73.59	29.99	71.74	69.39
	Percentage of households with internet access at home (0-100 % max)	59.46		90.12	96.53		44.74	93.46	76.52
	Percentage of individuals using the internet (0-100 % max)	54.30			91.28		47.16	96.02	80.86
	Adult Literacy (0-100% max)	96.84	100.00		99.00		98.21	99.00	99.73
	Cybersecurity (0-1 max)	0.10			0.00		0.47	0.00	0.44
ICT policy in different sectors	DRR Implementation 0 - 10 (max, the worst)	1.40			3.98		5.10	0.56	
	Ease of doing business (0-100 max)	64.57		97.44	94.40		69.40	95.11	84.78
	E-commerce legislation (0-4 max)	4.00			4.00		3.00	4.00	3.00
	Government Effectiveness -2.5 - 2.5(max)	0.52	1.48	1.74	1.09	1.17	-0.19	1.55	0.15
	ICT Regulatory Environment (0-100 max)	44.02			71.24		67.96	81.68	35.91
	Legal framework's adaptability to emerging technologies (1-7 max)			4.62	4.23		2.20	4.40	3.80
	mean year of schooling	7.90	5.47		12.80		10.20	12.00	12.00
	Public trust in politicians 1-7 (max)	4.00		4.80	4.50		2.50	2.50	
	R&D expenditure by governments and higher education (% of GDP) (0-100 max)	42.53		8.81	64.69		8.21	92.41	17.00
	Regulatory quality -2.5 - 2.5 (max)	-0.14		2.21	1.33		-0.03	1.09	-0.54
	Secure internet servers (per million population)	734.98		60,546.13	18,701.35		1,690.46	4,543.84	9,339.02
	Adoption of emerging technologies (1-7 max)			6.75	5.10		2.67	8.70	8.00
	Firms with website, % of total (0-100 % max)	65.71			96.24		32.51	64.04	56.89
	Government promotion of investment in emerging technologies (1-7 max)			4.93	4.64		2.41	4.89	3.81
	High-tech exports, % of total exports (0-100% max)	59.57		100.00	32.18		8.41	61.33	20.70
ICT's role in setting up new systems and applications	ICT PCT patent applications	58.38		69.94	55.14		0.00	82.85	18.41
	Internet shopping, % (0-100 % max)	58.06		54.55	58.85		8.49	92.94	34.47
	Investment in emerging technologies (1-7 max)	3.59		3.58	5.20		3.32	4.86	3.55
	Medium- and high-tech industry (0-100% max)	52.90		47.67	71.85		8.00	81.42	38.54
	Mobile apps development	62.76		76.31	80.31		66.05	83.40	73.15
	Prevalence of gig economy (1-7 max)			4.49	3.85		3.14	4.47	4.31
	R&D expenditure by businesses, % of GDP	42.53		2.02	64.69		0.51	90.41	10.00
	Availability of local online content (1-7max)	4.67		5.80	6.09		3.80	5.40	5.22
	E-Participation (0 - 1 max)	0.00			0.99		0.61	1.00	0.81
	Gender gap in internet use (1= balanced)			0.97	0.95		1.00	0.98	0.96
	GitHub commits per 1,000 population	3.39		26.97	18.00		1.21	13.90	13.97
	ICT skills (1-7 max)	4.66		5.24	4.43		3.78	4.99	4.95
	Online access to financial account (0-1 max)	0.50		0.45	0.34		0.40	0.71	0.44

Data Table shows the ICT scores and corresponding colors of indicators belonging to the countries

Clicking Pilar and Name to sort the indicators again


Clicking each country to highlight the selected country

Data Table linked to Map (Front Page)



Data Table and Tooltip shows the ICT scores and corresponding colors of indicators belonging to the countries and the colour code legend

The data tables are also linked to the interactive geographic maps, highlighting economic groups with tooltip of data on scores of hazard and exposure

Indicator Name ▲	Country ▲	
Active mobile-broadband subscriptions per 100 inhabitants (0-100 % max)	Kazakhstan	
Year of data access ▼	Score ▲	
2020 report	77.57	
Initial Source of data ▲		
https://www.itu.int/en/ITU-D/Statistics/Pages/stat/default.aspx		
Indicator Description ▼		
The term "active mobile-broadband subscriptions" refers to the sum of data and voice mobile-broadband subscriptions and data-only mobile-broadband subscriptions to the public Internet. It covers subscriptions actually used to access the Internet at broadband speeds, not subscriptions with potential access, even though the latter may have broadband-enabled handsets. Subscriptions must include a recurring subscription fee to access the Internet or pass a usage requirement – users must have accessed the Internet in the previous three months. It includes subscriptions to mobile-broadband networks that provide download speeds of at least 256 kbit/s (e.g. WCDMA, HSPA, CDMA2000 1x EV-DO, WiMAX IEEE 802.16e and LTE), and excludes subscriptions that only have access to GPRS, EDGE and CDMA 1xRTT.		

Color Code Interpretation:

0% – 30.9% - **Red**: the least network-ready economy in the pillar or component concerned. Requires more investments or support from other member states to achieve e-resilience.

31% – 44.9% - **Orange**: the economy does not perform well enough in the pillar or component concerned. In transition and requires more resources and capacity building and investments to achieve better e-resilience.

45%– 59.9% - **Yellow**: the economy is a good performer when it comes to the pillar or component concerned, nevertheless there is room for improvement which requires some more resources and capacity building to become more e-resilient.

60% – 74.9% - **Light green**: the economy is a strong performer as a result of solid showings in the pillar or component concerned. Ready for sharing experiences, services and tools (ex. e-platforms and e-market spaces) at interstate level, and there is some room for improvement to become more e-resilient.

75% – 100% - **Dark green**: the economies, which are the global leaders and most network-ready societies performing at the highest level in the index pillar or component concerned. Which in turn demonstrates high e-resilience and readiness for interstate share of experience and services.

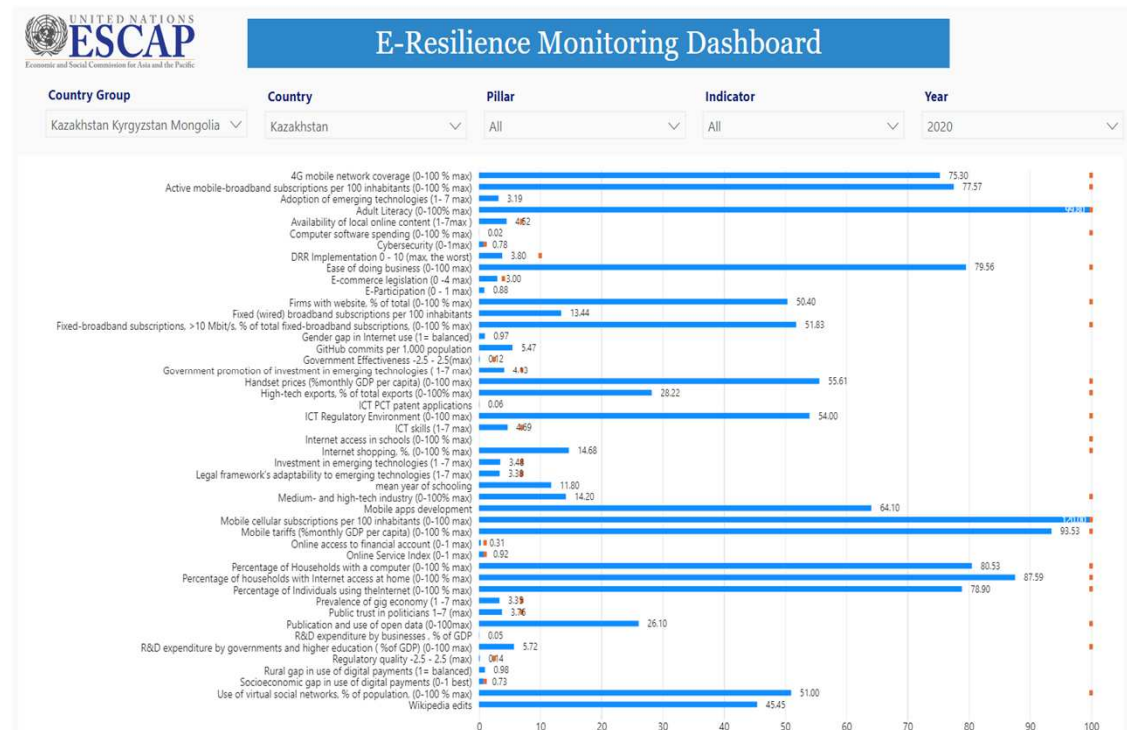
Data Table Tooltip (Front Page)

Tooltip appears when user hovers the mouse over certain data on the table

Tooltip displays Indicator Name, Country, Year of data access, Score, Source of data, Description of the the indicator

Bullet Chart

(2nd Page)

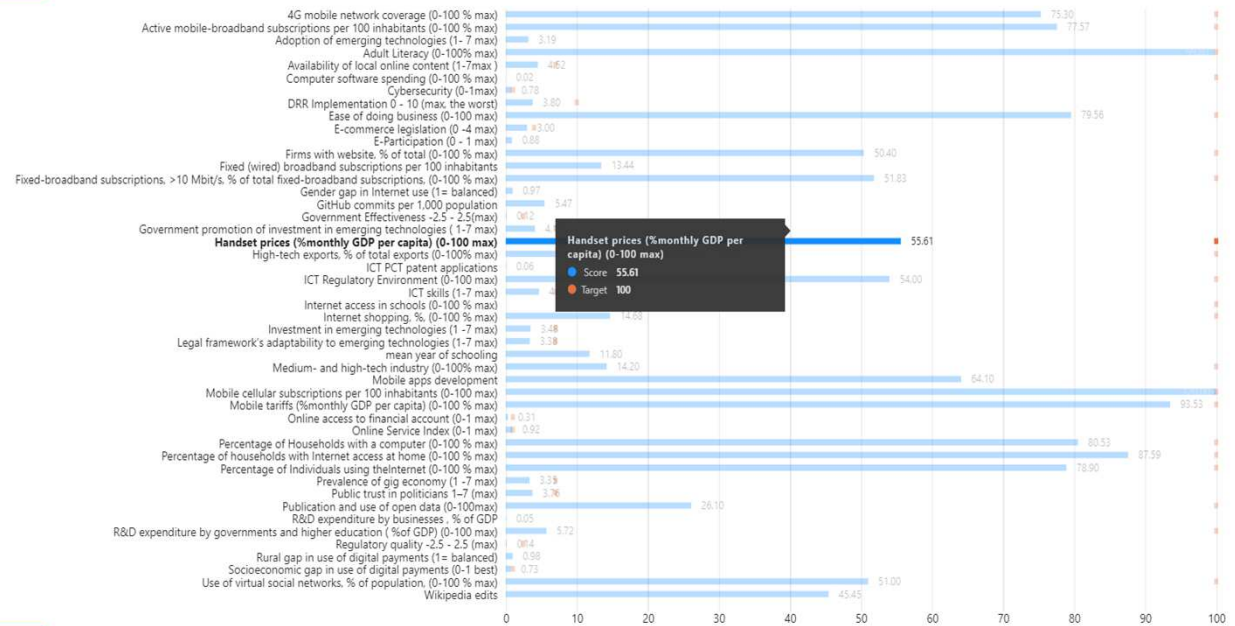


Bullet Chart shows the bullet data of all the indicators for each country

The Chart displays the score of indicators against the target score

Bullet Chart Tooltip

(2nd page)



Tooltip appears when hovering the mouse over the bar of certain indicator on the table

Tooltip highlights specific value of the Current Score and the Target Score

NCA

SPECA

ENEA

Pacific

SEA

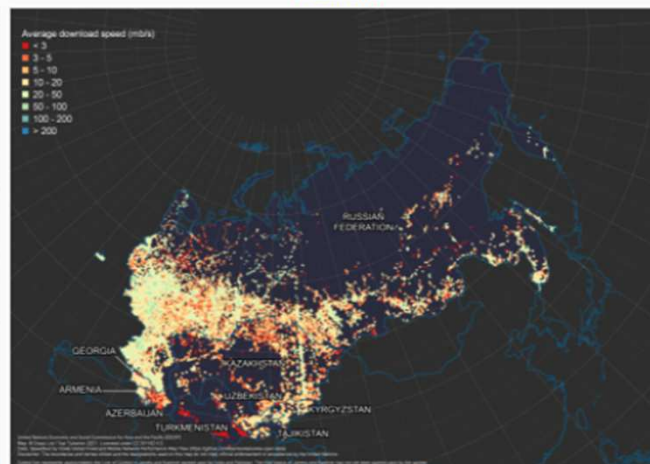
SSWA

LLDC

Mobile Grid



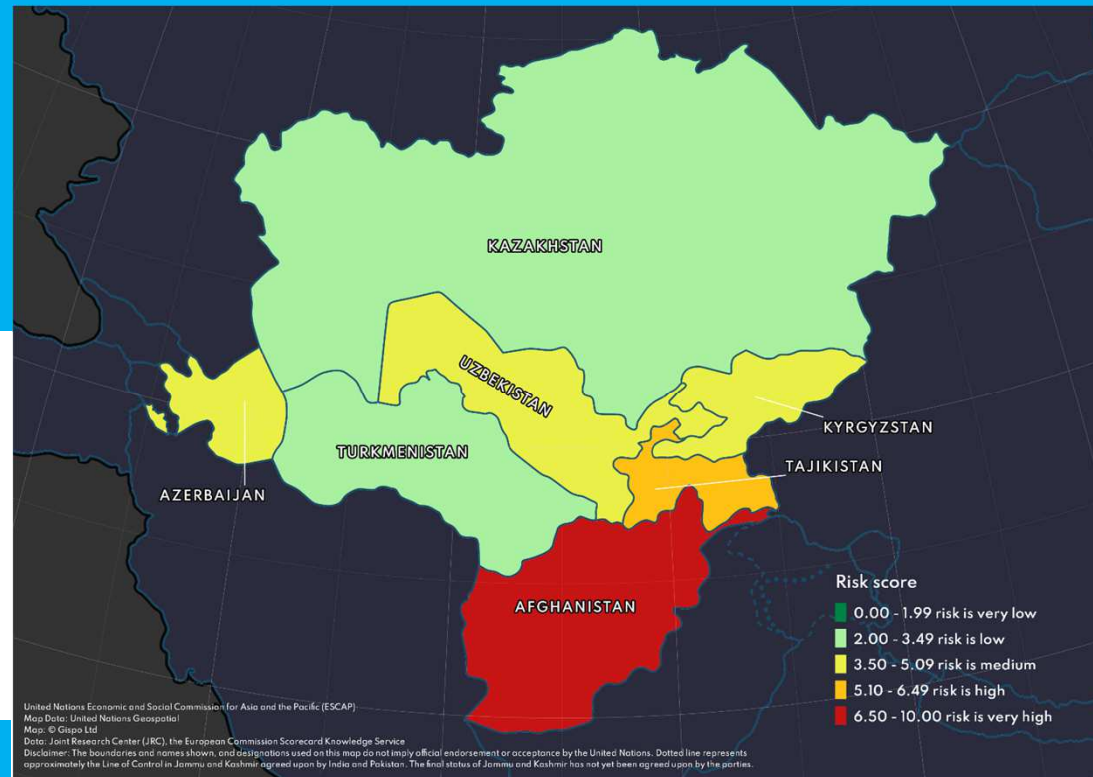
Fixed Grid



Internet Speed Maps (3rd Page)

Internet Speed Maps displays the mobile and fixed grid format of the seven country groups. Both types of the map displays the Average Download Speed. Navigate each country group through the sections above the map.

Hazard Maps (4th Page)



Hazard Maps display the risk score of each countries. The country groups can be selected on the left side of the map.

ICT Policy in Different Sectors (pillar)

Ease of Doing Business

Legal Framework's Adoptability to Emerging Technologies

E-Commerce Legislation

ICT Regulatory Environment

Secure Internet Servers

Cybersecurity

Regulatory Quality

Audit Literacy

Mean Year of Schooling

R&D Expenditure by Governments and Higher Education

Public Trust in Politicians

Government Effectiveness

DRR Implementation

ICT Infrastructure as a Physical Foundation (pillar)

Mobile Cellular Subscriptions per 100 Inhabitants

Percentage of Individuals Using the Internet

Fixed Broadband Subscriptions per 100 Inhabitants

Active Mobile-Broadband Subscriptions per 100 Inhabitants

Mobile Tariffs

Handset Prices

Computer Software Spending

Percentage of Households with Internet Access at Home

Percentage of Households with a Computer

4G Mobile Network Coverage

Fixed-Broadband Subscriptions

International Internet Bandwidth per Internet User (kbit/s)

Internet Access in Schools

ICT's Role in Data Management (pillar)

Online Service Indicator (OSI)

GitHub Commits per 1,000 Population

Wikipedia Edits

Availability of Local Online Content

Use of Virtual Social Networks

ICT Skills

Publication and Use of Open Data

Online Access to Financial Account

E-Participation

Gender Gap in Internet Use

Rural Gap in Use of Digital Payments

Socioeconomic Gap in Use of Digital Payments

ICT's Role in Setting up New Systems and Applications (Pillar)

ICT PCT Patent Applications

Firms with Website (% of total)

R&D Expenditure by Businesses

Government Promotion of Investment in Emerging Technologies

Investment in Emerging Technologies

Adoption of Emerging Technologies

Internet Shopping

Medium- and High-tech Industry

High-Tech Exports

Prevalence of Gig Economy

Mobile Apps Development

Acknowledgement

ESCAP secretariat expresses special thanks to Dr. Salma Abbasi, and the eWorldwide Group team for their contribution in creative design and development of the interactive monitoring dashboard in PowerBi format. Authors appreciate the primary and secondary data sources as indicated the interactive dashboard that are reflected for every data set.

Glossary of Terms; Abbreviations; Acronyms

DRR	Disaster Risk Reduction
E-Resilience	An ability of ICT systems to withstand, recover from and change in the face of external disturbance such as a natural disaster
GDP	Gross Domestic Product
Gig Economy	A labor market specific to digital platforms and to working arrangements that are focused on short-term contracts and task-based work
ICT	Information and Communications Technology
PCT	Patent Cooperation Treaty
R&D	Research and Development